



HIGHLY ERODIBLE LAND AND WETLAND CONSERVATION DETERMINATION

Name Address:	Wallendal Supply Inc, 2401 5th Ave. Grand Marsh, WI 53963	Request Date: 01/28/2011	County: Adams
		Tract No: 1321	Farm No.: 3960 4315 4345
		Agency/Person Requesting Determination:	Wallendal Supply

Section I - Highly Erodible Land

Is a soil survey now available for making a highly erodible land determination?	
Are there highly erodible soil map units on this farm?	

Fields in this section have undergone a determination of whether they are highly erodible land (HEL) or not; fields for which an HEL Determination has not been completed are not listed. In order to be eligible for USDA benefits, a person must be using an approved conservation system on all HEL.

Field(s)	HEL(Y/N)	Sodbust (Y/N)	Acres	Determination Date

The Highly Erodible Land determination was completed in the

Section II - Wetlands

Are there hydric soils on this farm?	Yes
--------------------------------------	-----

Fields in this section have had wetland determinations completed. See the Definition of Wetland Label Codes for additional information regarding allowable activities under the wetland conservation provisions of the Food Security Act and/or when wetland determinations are necessary to determine USDA program eligibility.

Field(s)	Wetland Label*	Occurrence Year (CW)**	Acres	Preliminary Determination Date	Final Certification Date
7-10 unnumbered	PC/NW		115.7	06/14/2011	07/16/2011
2, 3, 8, 15, 16, 13, 19	NW		83.7 86.6	06/14/2011	07/16/2011
2, 8, 15	W		32.0	06/14/2011	07/16/2011

The Preliminary Wetland Determination was completed in the field.
It was mailed to the USDA participant.

Remarks: Ditch in field 8 may be cleaned, provided the culvert isn't the restrictive elevation, one foot of sediment may be removed and spread on area adjacent to ditch that is NW. Tiling is restricted since a W cannot be affected. Field 15 is also restricted from tiling with existing wetlands. See attached letter for more details.

TCF: changed field 13, 19 (parts) to reflect lateral effect of ditch on 11/1/12

I certify that the above determinations are correct and were conducted in accordance with regulations and procedures contained in 7 CFR Part 12 and the National Food Security Act Manual.

Signature: Designated Conservationist	Date
<i>Michelle M. Kowalsky</i>	06/14/2011

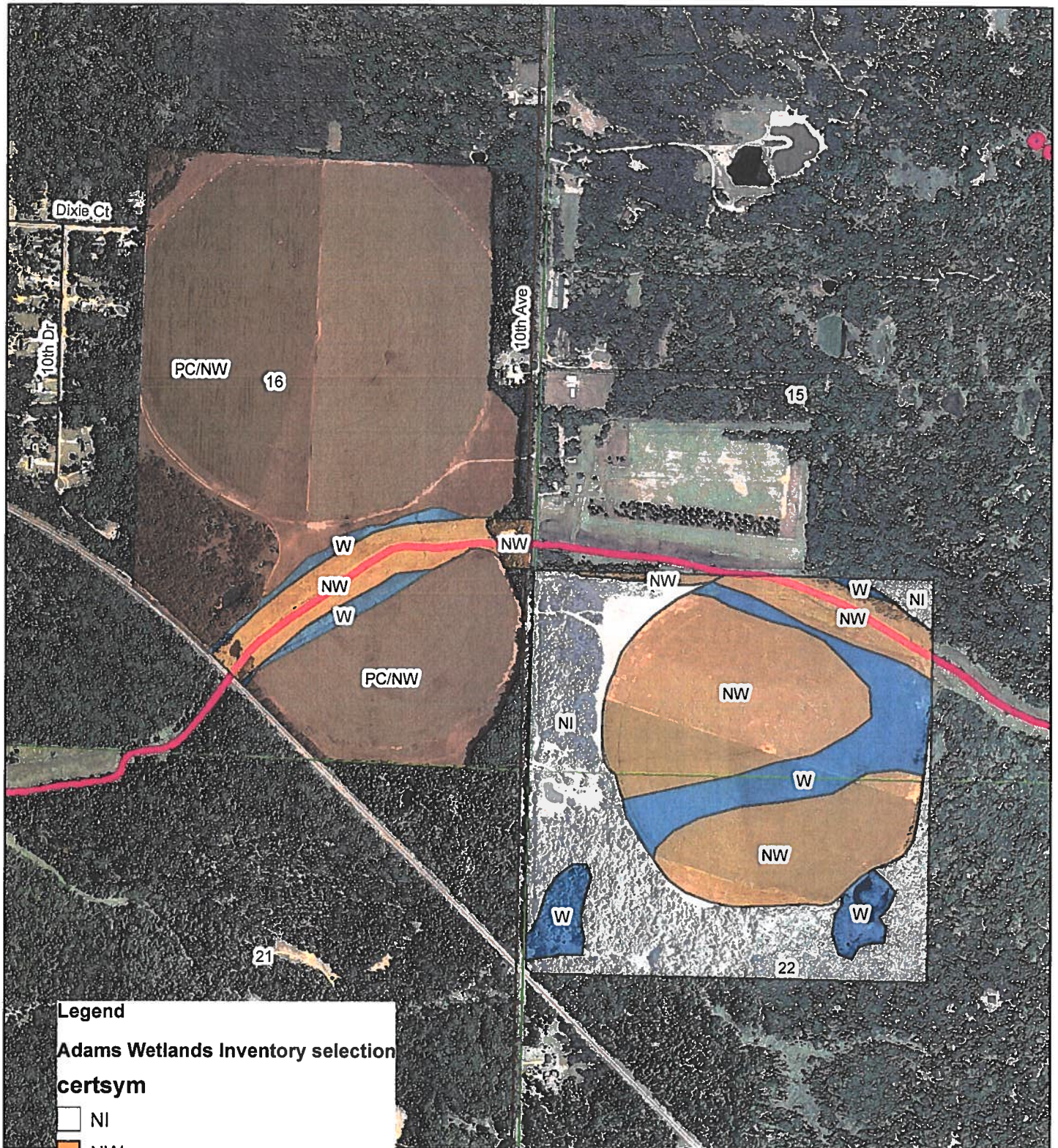
I certify the above determinations as Final. Preliminary Appeal Rights have been either concluded or not utilized in accordance with regulations and procedures contained in 7 CFR Part 614 and the National Food Security Act Manual.

Signature:	Date
<i>Michelle M. Kowalsky</i>	11/3/11

Wetland Determination M Farm 3960 Tract 1321

Customers: Wallendal Supply INC
T17N R6E Sec 15, 16, & 22
Adams County

Date: 10/15/2012
Agency: NRCS
Field Office: Westfield
Assisted By: T Frederick
FSA Administering Office: AMW



Legend

Adams Wetlands Inventory selection
certsym

- NI
- NW
- PC/NW
- W



hydro24k_i_wi001

0 660 1,320 1,980
Feet





United States Department
of Agriculture

Natural Resources
Conservation Service

NRCS-CPA-026e
1/2011

HIGHLY ERODIBLE LAND AND WETLAND CONSERVATION DETERMINATION

Name Address:	Wallendal Supply Inc. 2401 5th Ave Grand Marsh, WI 53963	Request Date: 01/28/2011	County: Adams
		Tract No: 3412	Farm No.: 3960 435 4345
		Agency/Person Requesting Determination:	Wallendal Supply Inc.

Section I - Highly Erodible Land

Is a soil survey now available for making a highly erodible land determination?	Yes
Are there highly erodible soil map units on this farm?	

Fields in this section have undergone a determination of whether they are highly erodible land (HEL) or not; fields for which an HEL Determination has not been completed are not listed. In order to be eligible for USDA benefits, a person must be using an approved conservation system on all HEL.

Field(s)	HEL(Y/N)	Sodbust (Y/N)	Acres	Determination Date

The Highly Erodible Land determination was completed in the

Section II - Wetlands

Are there hydric soils on this farm?	Yes
--------------------------------------	-----

Fields in this section have had wetland determinations completed. See the Definition of Wetland Label Codes for additional information regarding allowable activities under the wetland conservation provisions of the Food Security Act and/or when wetland determinations are necessary to determine USDA program eligibility.

Field(s)	Wetland Label*	Occurrence Year (CW)**	Acres	Preliminary Determination Date	Final Certification Date
1	NW		78.38	06/24/2011	
3	CW		7.97	10/25/2011	

The Preliminary Wetland Determination was completed in the field.
It was mailed to the USDA participant.

Remarks: See attached letter and map for more information.

I certify that the above determinations are correct and were conducted in accordance with regulations and procedures contained in 7 CFR Part 12 and the National Food Security Act Manual.

Signature: Designated Conservationist	Date
	6/28/11

I certify the above determinations as Final. Preliminary Appeal Rights have been either concluded or not utilized in accordance with regulations and procedures contained in 7 CFR Part 614 and the National Food Security Act Manual.

Signature: Designated Conservationist	Date
	11/3/11

The U.S. Department of Agriculture (USDA) prohibits discrimination in all of its programs and activities on the basis of race, color, national origin, age, disability, and where applicable, sex, marital status, familial status, parental status, religion, sexual orientation, political beliefs, genetic information, reprisal, or because all or part of an individual's income is derived from any public assistance program. (Not all prohibited bases apply to all programs.) Persons with disabilities who require alternative means for communication of program information (Braille, large print, audiotape, etc.) should contact USDA's TARGET Center at (202) 720-2600 (voice and TDD). To file a complaint of discrimination, write to USDA, Assistant Secretary for Civil Rights, Office of the Assistant Secretary for Civil Rights, 1400 Independence Avenue, S.W., Stop 9410, Washington, DC 20250-9410, or call toll-free at (866) 632-9992 (English) or (800) 877-8339 (TDD) or (866) 377-8642 (English Federal-relay) or (800) 845-6136 (Spanish Federal-relay). USDA is an equal opportunity provider and employer.

WETLAND INVENTORY MAP

TRACTS 3411 & 3412

Customers Wallendal Supply
Legal Description: T17N-R7E, Sections 31 & 32

Date: 6/24/2011
Agency: NRCS
Field Office: Westfield
Assisted By: T. Pautzke





HIGHLY ERODIBLE LAND AND WETLAND CONSERVATION DETERMINATION

Name Address:	WALLENDAL SUPPLY INC 2401 5TH AVENUE GRAND MARSH WI 53963 608-339-3654	Request Date: 01/28/2011	County: Adams
		Tract No: 3590	Farm No.: 3960 4315 4346
		Agency/Person Requesting Determination:	FSA

Section I - Highly Erodible Land

Is a soil survey now available for making a highly erodible land determination?	Yes
Are there highly erodible soil map units on this farm?	No

Fields in this section have undergone a determination of whether they are highly erodible land (HEL) or not; fields for which an HEL Determination has not been completed are not listed. In order to be eligible for USDA benefits, a person must be using an approved conservation system on all HEL.

Field(s)	HEL(Y/N)	Sodbust (Y/N)	Acres	Determination Date
1	No	No	18.4	11/08/2011

The Highly Erodible Land determination was completed in the office.

Section II - Wetlands

Are there hydric soils on this farm?	No
--------------------------------------	----

Fields in this section have had wetland determinations completed. See the Definition of Wetland Label Codes for additional information regarding allowable activities under the wetland conservation provisions of the Food Security Act and/or when wetland determinations are necessary to determine USDA program eligibility.

Field(s)	Wetland Label*	Occurrence Year (CW)**	Acres	Preliminary Determination Date	Final Certification Date
1	NW		17.6	11/08/2011	
1	W		0.7	11/08/2011	

The Preliminary Wetland Determination was completed in the field.
It was mailed to the USDA participant.

Remarks: OK to clear trees for cropping in field 1 of Tract 3590. The soils are non-hydric. Avoid any adverse manipulations to the Wetlands (W) area.

I certify that the above determinations are correct and were conducted in accordance with regulations and procedures contained in 7 CFR Part 12 and the National Food Security Act Manual.

Signature: Designated Conservationist	Date
<i>Michelle M. Koruskey</i>	11/8/11

I certify the above determinations as Final. Preliminary Appeal Rights have been either concluded or not utilized in accordance with regulations and procedures contained in 7 CFR Part 614 and the National Food Security Act Manual.

Signature:	Date
<i>Michelle M. Koruskey</i>	12/13/11

The U.S. Department of Agriculture (USDA) prohibits discrimination in all of its programs and activities on the basis of race, color, national origin, age, disability, and where applicable, sex, marital status, familial status, parental status, religion, sexual orientation, political beliefs, genetic information, reprisal, or because all or part of an individual's income is derived from any public assistance program. (Not all prohibited bases apply to all programs.) Persons with disabilities who require alternative means for communication of program information (Braille, large print, audiotape, etc.) should contact USDA's TARGET Center at (202) 720-2600 (voice and TDD). To file a complaint of discrimination, write to USDA, Assistant Secretary for Civil Rights, Office of the Assistant Secretary for Civil Rights, 1400 Independence Avenue, S.W., Stop 9410, Washington, DC 20250-9410, or call toll-free at (866) 632-9992 (English) or (800) 877-8339 (TDD) or (866) 377-8642 (English Federal-relay) or (800) 845-6136 (Spanish Federal-relay). USDA is an equal opportunity provider and employer.

Customers: Wallandai Supply Inc
T17N-R7E, Section 20
Town of Lincoln

Wetland Determination Map Farm 3960 Tract 3590

Date: 11/08/2011
Agency: NRCS
Field Office: Westfield
Assisted By: Hoffman
FSA Administering Office: AMW



Legend

 T3590

Wallandai T3590

Determinations

 NW

 W



N



3604 Andrew Walenda
T68 Robert Stodola

HIGHLY ERODIBLE LAND AND WETLAND CONSERVATION DETERMINATION

1. NAME OF USDA AGENCY OR PRODUCER REQUESTING DETERMINATION ASCS		2. DATE OF REQUEST 2/10/87	
3. NAME AND ADDRESS OF PRODUCER Walleodal Supply Inc. Rt. 1 Box 90 Grand Marsh, WI		4. FARM NO. 192,1388,468 4315 (F4348 T61)	5. COUNTY Adams

T61 John Andrew Peter W.

6. Is a soil survey now available for making a highly erodible land determination?	<input checked="" type="checkbox"/>	YES	NO
7. Are highly erodible soil map units on this farm?	<input type="checkbox"/>	YES	NO
8. a. List highly erodible fields that, according to ASCS records, were used to produce an agricultural commodity in any crop year during 1981-1985.			
b. Is an approved conservation plan being actively applied on all of these fields? If "no," list the fields (from the ASCS records) on which a plan is not being applied.			
9. a. List highly erodible fields that, according to ASCS records, have been converted for the production of agricultural commodities, were not used for this purpose in any crop year during 1981-1985, and were not enrolled in a USDA set-aside or diversion program.			
b. Is an approved conservation system being used on these fields? If "no," list the fields (from the ASCS records) on which a system is not being used.			
10. Are there other fields that (1) have highly erodible map units, (2) were not used to produce an agricultural commodity in any crop year after 1980, and (3) were not enrolled in a USDA set-aside or diversion program in any crop year during 1981-1985?			
11. CERTIFICATION: The conservation plan <input type="checkbox"/> and system(s) <input type="checkbox"/> were approved by the _____ Conservation District on _____, 19____, and conform with the technical requirements of the SCS field office technical guide for the _____ District.			

12. Are hydric soils on this farm? If "yes," list the fields (from the ASCS records) in which they occur.	<input type="checkbox"/>	YES	NO
13. Are wetlands on this farm? If "yes," list the fields, outline the wetland areas within fields on the ASCS photograph(s), and mark with "w".			
14. Are converted wetlands on this farm that have been converted since December 23, 1985? If "yes," list the fields, outline converted wetlands on the ASCS photograph(s), and mark with "cw".			
15. Are converted wetlands covered by exemptions? If "yes," list those fields, outline the exempt converted wetlands on the ASCS photograph(s), and mark with "ecw". Note the exemptions for each area:			
a. Field No. _____	c. Field No. _____		
b. Exemption _____	d. Exemption _____		

16. The wetland determination was done in the office field .

17. This determination was hand delivered mailed to the producer on 02-15-87 (DATE).

Any producer who does not agree with this determination may request reconsideration from the person making the determination. This request is a prerequisite for any further appeal. The request must be in writing and must set forth reasons for the request. It must be received by SCS within 15 days after the producer receives the determination.

18. REMARKS
 Fields ~~T67-#1B~~, ~~T68-#4~~, ~~T61-#1~~, ~~MT 1941-#15~~, and ~~T1483-#1~~ are NOT HEL
 Clearing ditch in field T67 #1 is not draining wetland.

19. SIGNATURE OF SCS DISTRICT CONSERVATIONIST: Steven H. Bernstein DATE: 2/13/87



HIGHLY ERODIBLE LAND AND WETLAND CONSERVATION DETERMINATION

Name Address: WALLENDAL SUPPLY INC 2401 5TH AVENUE GRAND MARSH WI 53963 608-339-3654 Request Date: 01/28/2011 Tract No: 567 Agency/Person Requesting Determination: County: Adams Farm No.: 3960 4375 FSA 4348

Section I - Highly Erodible Land

Is a soil survey now available for making a highly erodible land determination? Yes Are there highly erodible soil map units on this farm? Yes

Fields in this section have undergone a determination of whether they are highly erodible land (HEL) or not; fields for which an HEL Determination has not been completed are not listed. In order to be eligible for USDA benefits, a person must be using an approved conservation system on all HEL.

Table with 5 columns: Field(s), HEL(Y/N), Sodbust (Y/N), Acres, Determination Date. Row 1: 1,2,3, No, No, 169.3, 11/07/2011

The Highly Erodible Land determination was completed in the office.

Section II - Wetlands

Are there hydric soils on this farm? Yes

Fields in this section have had wetland determinations completed. See the Definition of Wetland Label Codes for additional information regarding allowable activities under the wetland conservation provisions of the Food Security Act and/or when wetland determinations are necessary to determine USDA program eligibility.

Table with 6 columns: Field(s), Wetland Label*, Occurrence Year (CW)**, Acres, Preliminary Determination Date, Final Certification Date. Row 1: 1,3, NW, , 157.6, 10/25/2011, 11/07/2011

The Preliminary Wetland Determination was completed in the field. It was mailed to the USDA participant.

Remarks:

I certify that the above determinations are correct and were conducted in accordance with regulations and procedures contained in 7 CFR Part 12 and the National Food Security Act Manual.

Signature: Designated Conservationist Date 11/8/11

I certify the above determinations as Final. Preliminary Appeal Rights have been either concluded or not utilized in accordance with regulations and procedures contained in 7 CFR Part 614 and the National Food Security Act Manual.

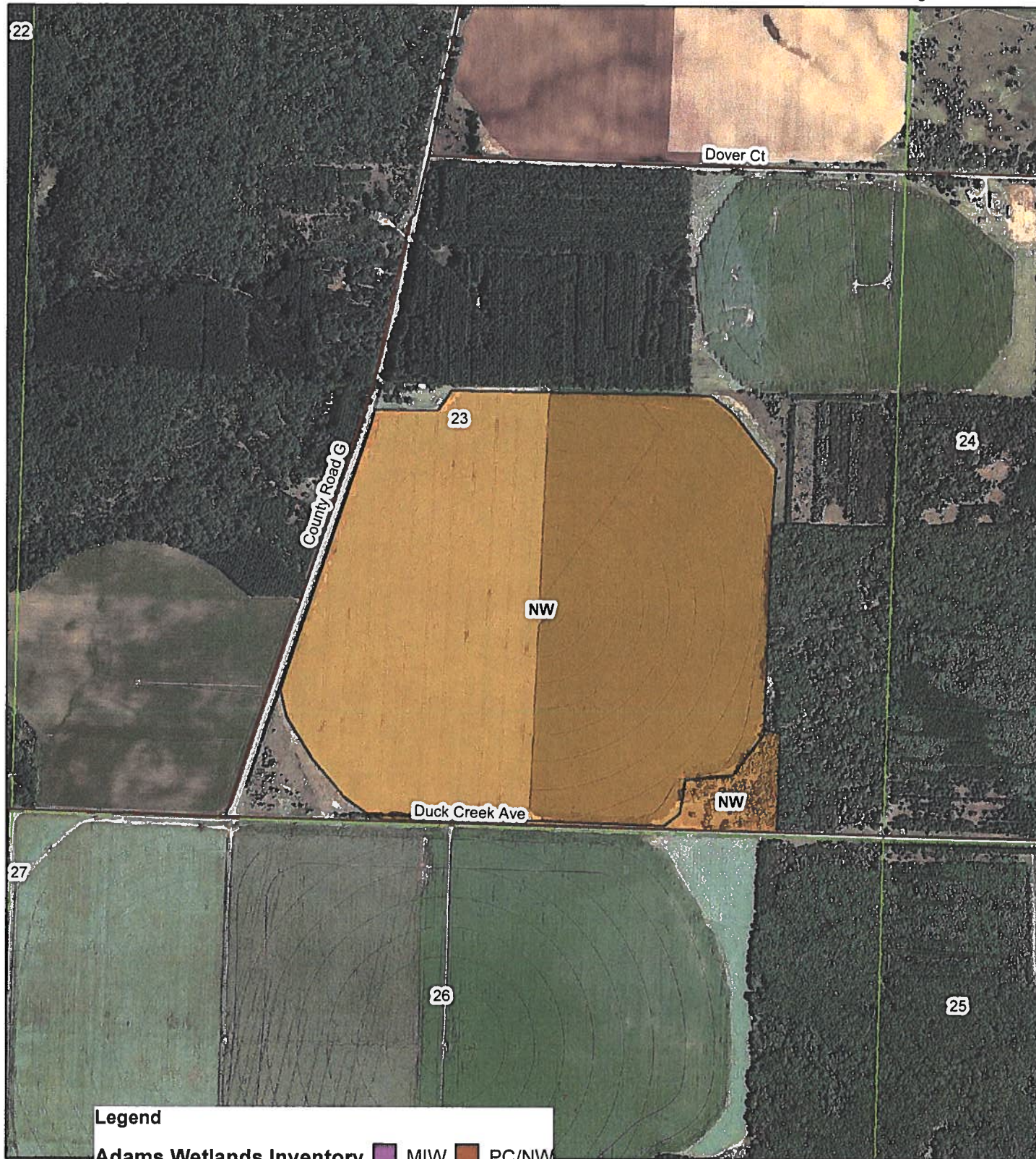
Signature: Date 11/8/11

The U.S. Department of Agriculture (USDA) prohibits discrimination in all of its programs and activities on the basis of race, color, national origin, age, disability, and where applicable, sex, marital status, familial status, parental status, religion, sexual orientation, political beliefs, genetic information, reprisal, or because all or part of an individual's income is derived from any public assistance program.

Customers: Wallandal Supply Inc
T17N-R7E, Section 23
Town of Lincoln

Wetland Determination Map Farm 3960 Tract 567

Date: 11/07/2011
Agency: NRCS
Field Office: Westfield
Assisted By: Hoffman
FSA Administering Office: AMW



Legend

Adams Wetlands Inventory

certsym

-  CW
-  FW
-  FWP

-  MIW
-  MW
-  NI
-  NW
-  PC
-  PC/NW
-  W
-  WX





HIGHLY ERODIBLE LAND AND WETLAND CONSERVATION DETERMINATION

Name Address:	WALLENDAL SUPPLY INC 2401 5TH AVENUE GRAND MARSH WI 53963 608-339-3654	Request Date: 01/28/2011	County: Adams
		Tract No: 3591	Farm No.: 3960 4345 4348
		Agency/Person Requesting Determination:	FSA

Section I - Highly Erodible Land

Is a soil survey now available for making a highly erodible land determination?	Yes
Are there highly erodible soil map units on this farm?	Yes

Fields in this section have undergone a determination of whether they are highly erodible land (HEL) or not; fields for which an HEL Determination has not been completed are not listed. In order to be eligible for USDA benefits, a person must be using an approved conservation system on all HEL.

<u>Field(s)</u>	<u>HEL(Y/N)</u>	<u>Sodbust (Y/N)</u>	<u>Acres</u>	<u>Determination Date</u>
1-4	No	No	141.5	11/08/2011
5,7,10,14	No	Yes	16.7	11/08/2011

The Highly Erodible Land determination was completed in the office.

Section II - Wetlands

Are there hydric soils on this farm?	No
--------------------------------------	----

Fields in this section have had wetland determinations completed. See the Definition of Wetland Label Codes for additional information regarding allowable activities under the wetland conservation provisions of the Food Security Act and/or when wetland determinations are necessary to determine USDA program eligibility.

<u>Field(s)</u>	<u>Wetland Label*</u>	<u>Occurrence Year (CW)**</u>	<u>Acres</u>	<u>Preliminary Determination Date</u>	<u>Final Certification Date</u>
1-5,7,10,14	NW		158.2	11/08/2011	

The Preliminary Wetland Determination was completed in the field.
It was mailed to the USDA participant.

Remarks: OK to clear trees and install tile for cropping in Tract 3591. The soils are non-hydric.

I certify that the above determinations are correct and were conducted in accordance with regulations and procedures contained in 7 CFR Part 12 and the National Food Security Act Manual.

Signature: Designated Conservationist	Date
<i>Michelle M. Kowster</i>	11/8/11

I certify the above determinations as Final. Preliminary Appeal Rights have been either concluded or not utilized in accordance with regulations and procedures contained in 7 CFR Part 614 and the National Food Security Act Manual.

Signature:	Date
<i>Michelle M. Kowster</i>	11/8/11

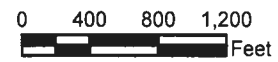
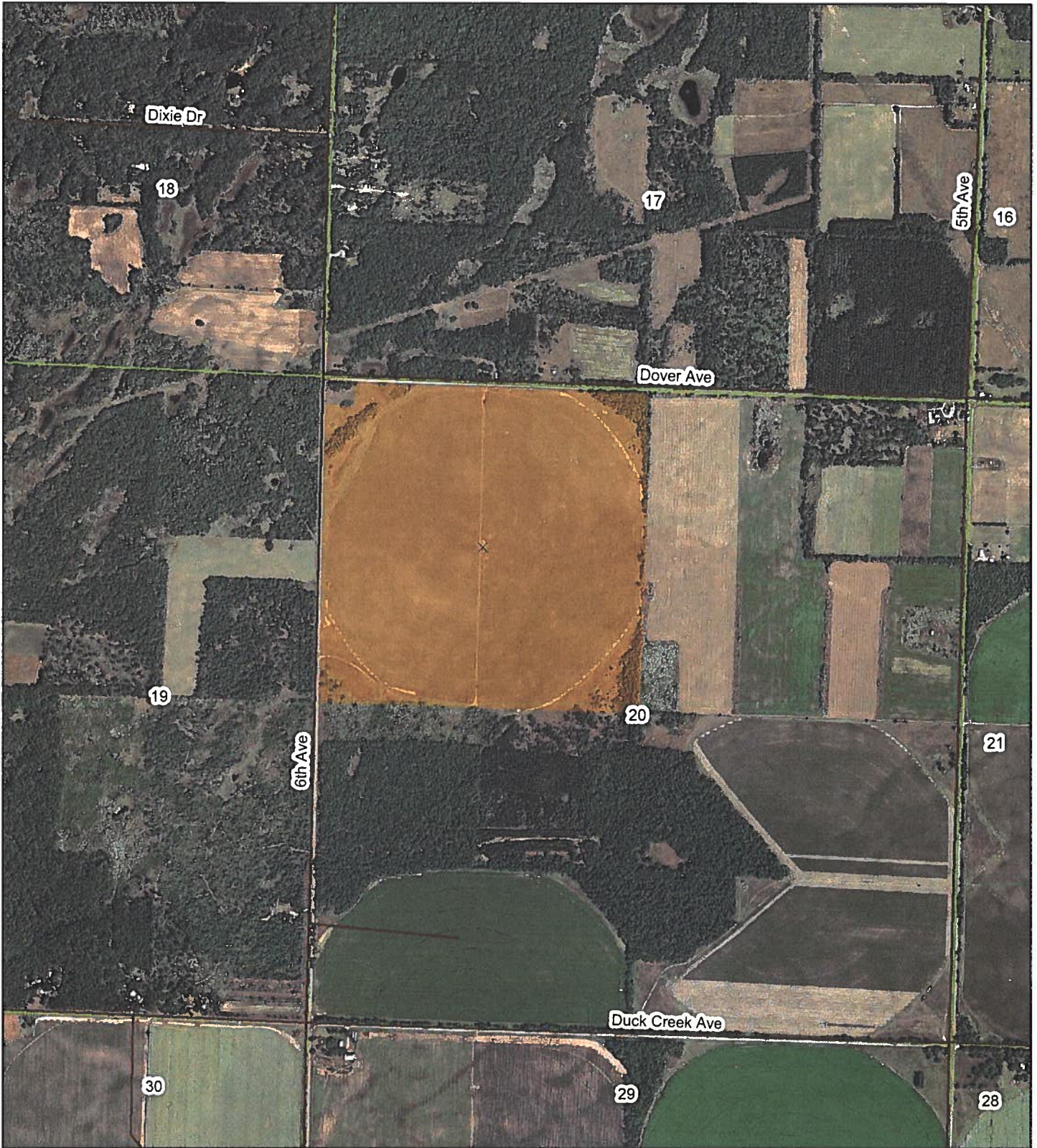
The U.S. Department of Agriculture (USDA) prohibits discrimination in all of its programs and activities on the basis of race, color, national origin, age, disability, and where applicable, sex, marital status, familial status, parental status, religion, sexual orientation, political beliefs, genetic information, reprisal, or because all or part of an individual's income is derived from any public assistance program. (Not all prohibited bases apply to all programs.) Persons with disabilities who require alternative means for communication of program information (Braille, large print, audiotape, etc.) should contact USDA's TARGET Center at (202) 720-2600 (voice and TDD). To file a complaint of discrimination, write to USDA, Assistant Secretary for Civil Rights, Office of the Assistant Secretary for Civil Rights, 1400 Independence Avenue, S.W., Stop 9410, Washington, DC 20250-9410, or call toll-free at (866) 632-9992 (English) or (800) 877-8339 (TDD) or (866) 377-8642 (English Federal-relay) or (800) 845-6136 (Spanish Federal-relay). USDA is an equal opportunity provider and employer.

Customers: Wallandal Supply Inc
T17N-R7E, Section 20
Town of Lincoln

Wetland Determination Map

Farm 3960 Tract 3591

Date: 11/08/2011
Agency: NRCS
Field Office: Westfield
Assisted By: Hoffman
FSA Administering Office: AMW



Legend



Determination

■ NW



HIGHLY ERODIBLE LAND AND WETLAND CONSERVATION DETERMINATION

Name Address:	WALLENDAL SUPPLY 2401 5th AVENUE GRAND MARSH WI 53963 608-408-0248	Request Date: 10/16/2012	County: ADAMS
		Tract No: 3586	Farm No.: 3960 4351
		Agency/Person Requesting Determination:	Wallendal

Section I - Highly Erodible Land

Is a soil survey now available for making a highly erodible land determination?	
Are there highly erodible soil map units on this farm?	

Fields in this section have undergone a determination of whether they are highly erodible land (HEL) or not; fields for which an HEL Determination has not been completed are not listed. In order to be eligible for USDA benefits, a person must be using an approved conservation system on all HEL.

Field(s)	HEL(Y/N)	Sodbust (Y/N)	Acres	Determination Date

The Highly Erodible Land determination was completed in the

Section II - Wetlands

Are there hydric soils on this farm?	No
--------------------------------------	----

Fields in this section have had wetland determinations completed. See the Definition of Wetland Label Codes for additional information regarding allowable activities under the wetland conservation provisions of the Food Security Act and/or when wetland determinations are necessary to determine USDA program eligibility.

Field(s)	Wetland Label*	Occurrence Year (CW)**	Acres	Preliminary Determination Date	Final Certification Date
1,3,4,5,6,7,8,9,12,14,16,17	PC/NW		139	11/05/2012	
18,19,20,21	PC/NW		61.7	11/05/2012	

The Preliminary Wetland Determination was completed in the office.
It was mailed to the USDA participant.

Remarks: You are allowed to remove trees in fields 1,3-9,14,16,17-21 as indicated on your request. The fields are PC/NW. Fields 18,19 & 20 are HEL or Sodbust and an approved conservation plan must be applied in the tree removal.

I certify that the above determinations are correct and were conducted in accordance with regulations and procedures contained in 7 CFR Part 12 and the National Food Security Act Manual.

Signature: Designated Conservationist	Date
Chanc Vogel <small>Digitally signed by Chanc Vogel DN: cn=Chanc Vogel, o=NRCS, ou=USDA, email=chanc.vogel@wi.usda.gov, c=US Date: 2012.11.28 12:44:28 -0600</small>	11/26/2012

I certify the above determinations as Final. Preliminary Appeal Rights have been either concluded or not utilized in accordance with regulations and procedures contained in 7 CFR Part 614 and the National Food Security Act Manual.

Signature:	Date
<i>Michelle M. Konstein</i>	12/27/12

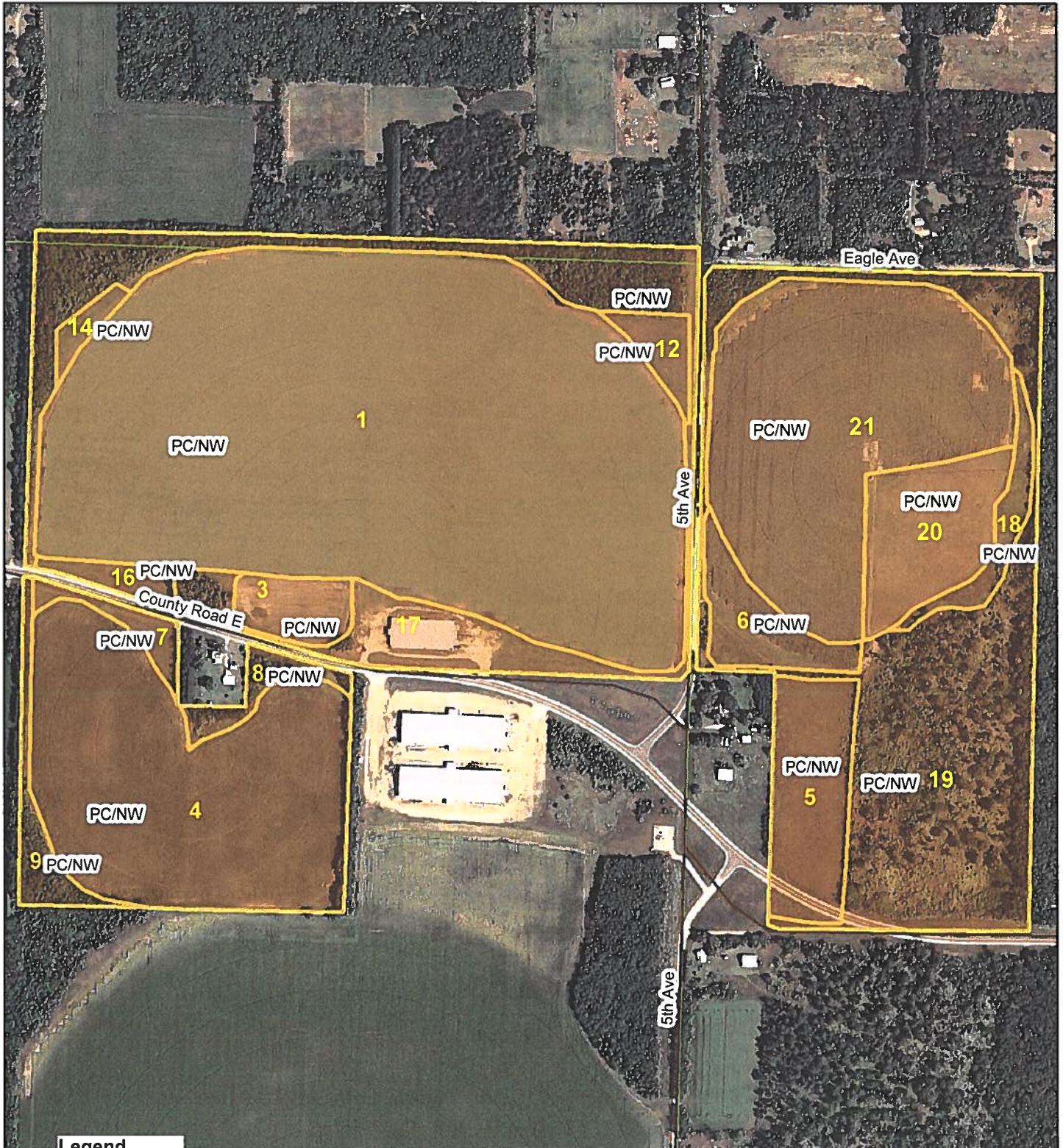
The U.S. Department of Agriculture (USDA) prohibits discrimination in all of its programs and activities on the basis of race, color, national origin, age, disability, and where applicable, sex, marital status, familial status, parental status, religion, sexual orientation, political beliefs, genetic information, reprisal, or because all or part of an individual's income is derived from any public assistance program. (Not all prohibited bases apply to all programs.) Persons with disabilities who require alternative means for communication of program information (Braille, large print, audiotape, etc.) should contact USDA's TARGET Center at (202) 720-2600 (voice and TDD). To file a complaint of discrimination, write to USDA, Assistant Secretary for Civil Rights, Office of the Assistant Secretary for Civil Rights, 1400 Independence Avenue, S.W., Stop 9410, Washington, DC 20250-9410, or call toll-free at (866) 632-9992 (English) or (800) 877-8339 (TDD) or (866) 377-8642 (English Federal-relay) or (800) 845-6136 (Spanish Federal-relay). USDA is an equal opportunity provider and employer.

Wetland Determination Map

Farm 3960 Tract 3586



Customer(s): WALLENDAL SUPPLY INC
T16N R7E Sec 8 & 9
Town of New Chester
Adams County

Date: 11/20/2012
Agency: NRCS
Field Office: Westfield
Assisted By: J Hoffman
FSA Administering Office: AMW



Legend

certsym

-  PC/NW
-  Tract 3586



N





HIGHLY ERODIBLE LAND AND WETLAND CONSERVATION DETERMINATION

Name Address: WALLENDAL SUPPLY 2401 5th AVENUE GRAND MARSH WI 53963 608-408-0248 Request Date: 10/16/2012 County: ADAMS Tract No: 3410 4177 Farm No.: 3960 4315 4351 Agency/Person Requesting Determination: Wallendal

Section I - Highly Erodible Land

Is a soil survey now available for making a highly erodible land determination? Are there highly erodible soil map units on this farm?

Fields in this section have undergone a determination of whether they are highly erodible land (HEL) or not; fields for which an HEL Determination has not been completed are not listed. In order to be eligible for USDA benefits, a person must be using an approved conservation system on all HEL.

Table with 5 columns: Field(s), HEL(Y/N), Sodbust (Y/N), Acres, Determination Date

The Highly Erodible Land determination was completed in the

Section II - Wetlands

Are there hydric soils on this farm? No

Fields in this section have had wetland determinations completed. See the Definition of Wetland Label Codes for additional information regarding allowable activities under the wetland conservation provisions of the Food Security Act and/or when wetland determinations are necessary to determine USDA program eligibility.

Table with 6 columns: Field(s), Wetland Label*, Occurrence Year (CW)**, Acres, Preliminary Determination Date, Final Certification Date

The Preliminary Wetland Determination was completed in the office. It was mailed to the USDA participant.

Remarks: You are allowed to remove trees in fields 1-4,10-12 as indicated on your request. The fields are PC/NW. Field 8 is actually water and you may not remove trees in that field. Fields 10,11 & 12 require an approved conservation plan prior to tree removal as they are HEL or Sodbust fields.

I certify that the above determinations are correct and were conducted in accordance with regulations and procedures contained in 7 CFR Part 12 and the National Food Security Act Manual.

Signature: Designated Conservationist Date Chanc Vogel 11/26/2012

I certify the above determinations as Final. Preliminary Appeal Rights have been either concluded or not utilized in accordance with regulations and procedures contained in 7 CFR Part 614 and the National Food Security Act Manual.

Signature: Date Michelle M Kowsky 12/27/12

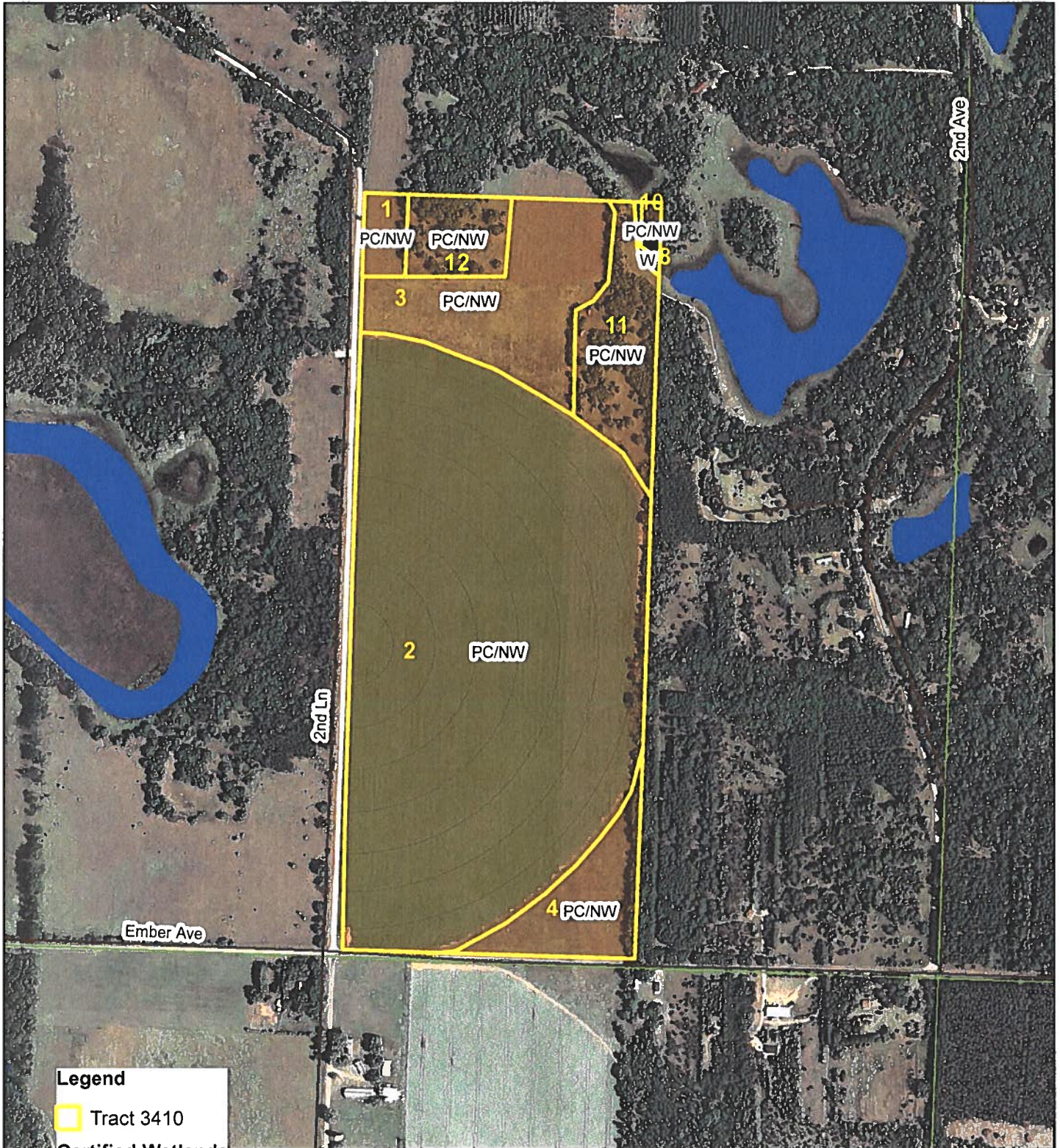
The U.S. Department of Agriculture (USDA) prohibits discrimination in all of its programs and activities on the basis of race, color, national origin, age, disability, and where applicable, sex, marital status, familial status, parental status, religion, sexual orientation, political beliefs, genetic information, reprisal, or because all or part of an individual's income is derived from any public assistance program.

Wetland Determination Map

Farm 3960 Tract 3410

Customer(s): WALLENDAL SUPPLY INC
T16N R7E Sec 23
Town of New Chester
Adams County

Date: 11/20/2012
Agency: NRCS
Field Office: Westfield
Assisted By: J Hoffman
FSA Administering Office: AMW



Legend

Tract 3410

Certified Wetlands

certsym

PC/NW

W

0 330 660 990
Feet

N



HIGHLY ERODIBLE LAND AND WETLAND CONSERVATION DETERMINATION

Name Address:	Wallendal Supply Inc. 2401 5th Ave Grand Marsh, WI 53963	Request Date: 01/28/2011	County: Adams
		Tract No: 3411	Farm No.: 3960 4353
		Agency/Person Requesting Determination:	Wallendal Supply Inc.

Section I - Highly Erodible Land

Is a soil survey now available for making a highly erodible land determination?	Yes
Are there highly erodible soil map units on this farm?	

Fields in this section have undergone a determination of whether they are highly erodible land (HEL) or not; fields for which an HEL Determination has not been completed are not listed. In order to be eligible for USDA benefits, a person must be using an approved conservation system on all HEL.

Field(s)	HEL(Y/N)	Sodbust (Y/N)	Acres	Determination Date

The Highly Erodible Land determination was completed in the

Section II - Wetlands

Are there hydric soils on this farm?	Yes
--------------------------------------	-----

Fields in this section have had wetland determinations completed. See the Definition of Wetland Label Codes for additional information regarding allowable activities under the wetland conservation provisions of the Food Security Act and/or when wetland determinations are necessary to determine USDA program eligibility.

Field(s)	Wetland Label*	Occurrence Year (CW)**	Acres	Preliminary Determination Date	Final Certification Date
3	PC/NW		117.74	06/24/2011	

The Preliminary Wetland Determination was completed in the field.
It was mailed to the USDA participant.

Remarks: See attached letter and map for more information.

I certify that the above determinations are correct and were conducted in accordance with regulations and procedures contained in 7 CFR Part 12 and the National Food Security Act Manual.

Signature: Designated Conservationist	Date
<i>Scott Doty</i> NRCS SCT	6/28/11

I certify the above determinations as Final. Preliminary Appeal Rights have been either concluded or not utilized in accordance with regulations and procedures contained in 7 CFR Part 614 and the National Food Security Act Manual.

Signature: Designated Conservationist	Date
<i>Michelle M. Kausky</i>	11/3/11

The U.S. Department of Agriculture (USDA) prohibits discrimination in all of its programs and activities on the basis of race, color, national origin, age, disability, and where applicable, sex, marital status, familial status, parental status, religion, sexual orientation, political beliefs, genetic information, reprisal, or because all or part of an individual's income is derived from any public assistance program. (Not all prohibited bases apply to all programs.) Persons with disabilities who require alternative means for communication of program information (Braille, large print, audiotape, etc.) should contact USDA's TARGET Center at (202) 720-2600 (voice and TDD). To file a complaint of discrimination, write to USDA, Assistant Secretary for Civil Rights, Office of the Assistant Secretary for Civil Rights, 1400 Independence Avenue, S.W., Stop 9410, Washington, DC 20250-9410, or call toll-free at (866) 632-9992 (English) or (800) 877-8339 (TDD) or (866) 377-8642 (English Federal-relay) or (800) 845-6136 (Spanish Federal-relay). USDA is an equal opportunity provider and employer.

WETLAND INVENTORY MAP TRACTS 3411 & 3412

Customers Wallendal Supply
Legal Description: T17N-R7E, Sections 31 & 32

Date: 6/24/2011
Agency: NRCS
Field Office: Westfield
Assisted By: T. Pautzke





HIGHLY ERODIBLE LAND AND WETLAND CONSERVATION DETERMINATION

Name: Wallendal Supply Inc. Request Date: 5/29/09 County: Adams
Agency or Person Requesting Determination: FSA Tract No: 3747 FSA Farm No.: 3809

Handwritten notes: 3960, 4315, 4354

Section I - Highly Erodible Land

Is a soil survey now available for making a highly erodible land determination? Yes
Are there highly erodible soil map units on this farm? Yes

Fields in this section have undergone a determination of whether they are highly erodible land (HEL) or not; fields for which an HEL Determination has not been completed are not listed.

Table with 5 columns: Field(s), HEL(Y/N), Sodbust(Y/N), Acres, Determination Date. Row 1: 4,5,6,8,9,10,12,14,16,17,24,27, N, 599.1, Prior

The Highly Erodible Land determination was completed in the office .

Section II - Wetlands

Are there hydric soils on this farm?

Fields in this section have had wetland determinations completed. See the Definition of Wetland Label Codes for additional information regarding allowable activities under the wetland conservation provisions of the Food Security Act and/or when wetland determinations are necessary to determine USDA program eligibility.

Table with 6 columns: Field(s), Wetland Label*, Occurrence Year (CW)**, Acres, Determination Date, Certification Date

The wetland determination was completed in the . It was to the person on .

Remarks: Wetland determination available upon request.

I certify that the above determinations are correct and were conducted in accordance with policies and procedures contained in the National Food Security Act Manual.

Signature Designated Conservationist: Michelle M Komiskey Date: 11/05/09

The U.S. Department of Agriculture (USDA) prohibits discrimination in all its programs and activities on the basis of race, color, national origin, gender, religion, age, disability, political beliefs, sexual orientation, and marital or family status.

To file a complaint of discrimination, write USDA, Director, Office of Civil Rights, Room 326W, Whitten Building, 14th and Independence Avenue, SW, Washington, DC 20250-9410 or call (202) 720-5964 (voice or TDD).

SOILS MAP TRACT 3747

Date: 11/5/2009

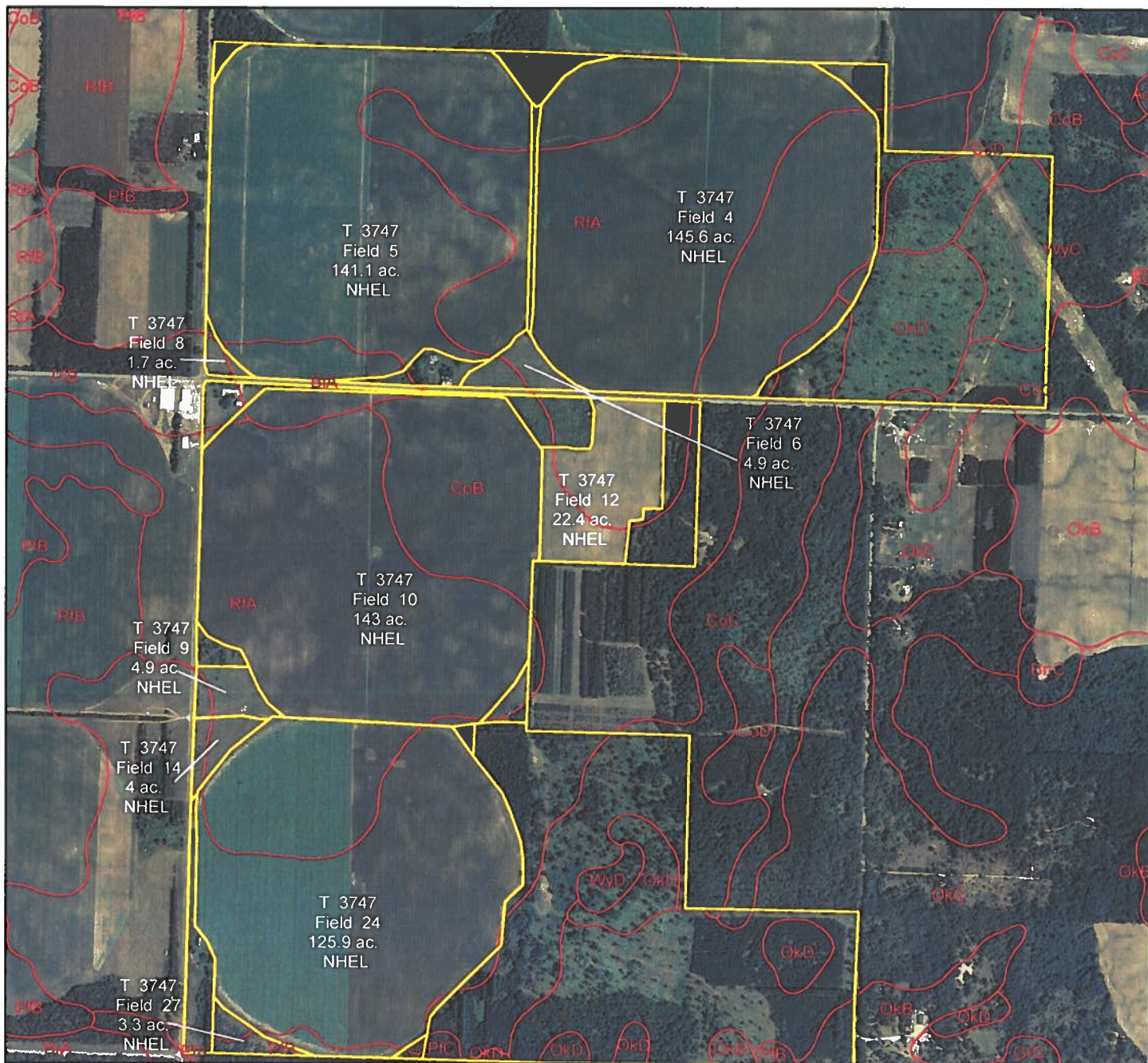
Customer(s): WALLENDAL SUPPLY INC

Field Office: WESTFIELD SERVICE CENTER

Agency: USDA-NRCS

Assisted By: Peterson, Cindy J

Legal Description: T17N R7E SECTIONS 27 28 & 33



Legend



WALLENDAL_SUPPLY_INC_PLU

Adams Soils





HIGHLY ERODIBLE LAND AND WETLAND CONSERVATION DETERMINATION

Form with fields: Name Address, Request Date, County, Tract No, Farm No., Agency/Person Requesting Determination.

Section I - Highly Erodible Land

Is a soil survey now available for making a highly erodible land determination? Yes
Are there highly erodible soil map units on this farm? No

Fields in this section have undergone a determination of whether they are highly erodible land (HEL) or not; fields for which an HEL Determination has not been completed are not listed.

Table with columns: Field(s), HEL(Y/N), Sodbust (Y/N), Acres, Determination Date. Rows for fields 1,2,4 and 3.

The Highly Erodible Land determination was completed in the office.

Section II - Wetlands

Are there hydric soils on this farm?

Fields in this section have had wetland determinations completed. See the Definition of Wetland Label Codes for additional information regarding allowable activities under the wetland conservation provisions of the Food Security Act and/or when wetland determinations are necessary to determine USDA program eligibility.

Table with columns: Field(s), Wetland Label*, Occurrence Year (CW)**, Acres, Preliminary Determination Date, Final Certification Date.

The Preliminary Wetland Determination was completed in the office. It was

Remarks:

I certify that the above determinations are correct and were conducted in accordance with regulations and procedures contained in 7 CFR Part 12 and the National Food Security Act Manual.

Signature: Designated Conservationist, Date: 10/30/12

I certify the above determinations as Final. Preliminary Appeal Rights have been either concluded or not utilized in accordance with regulations and procedures contained in 7 CFR Part 614 and the National Food Security Act Manual.

Signature, Date: 12/27/12

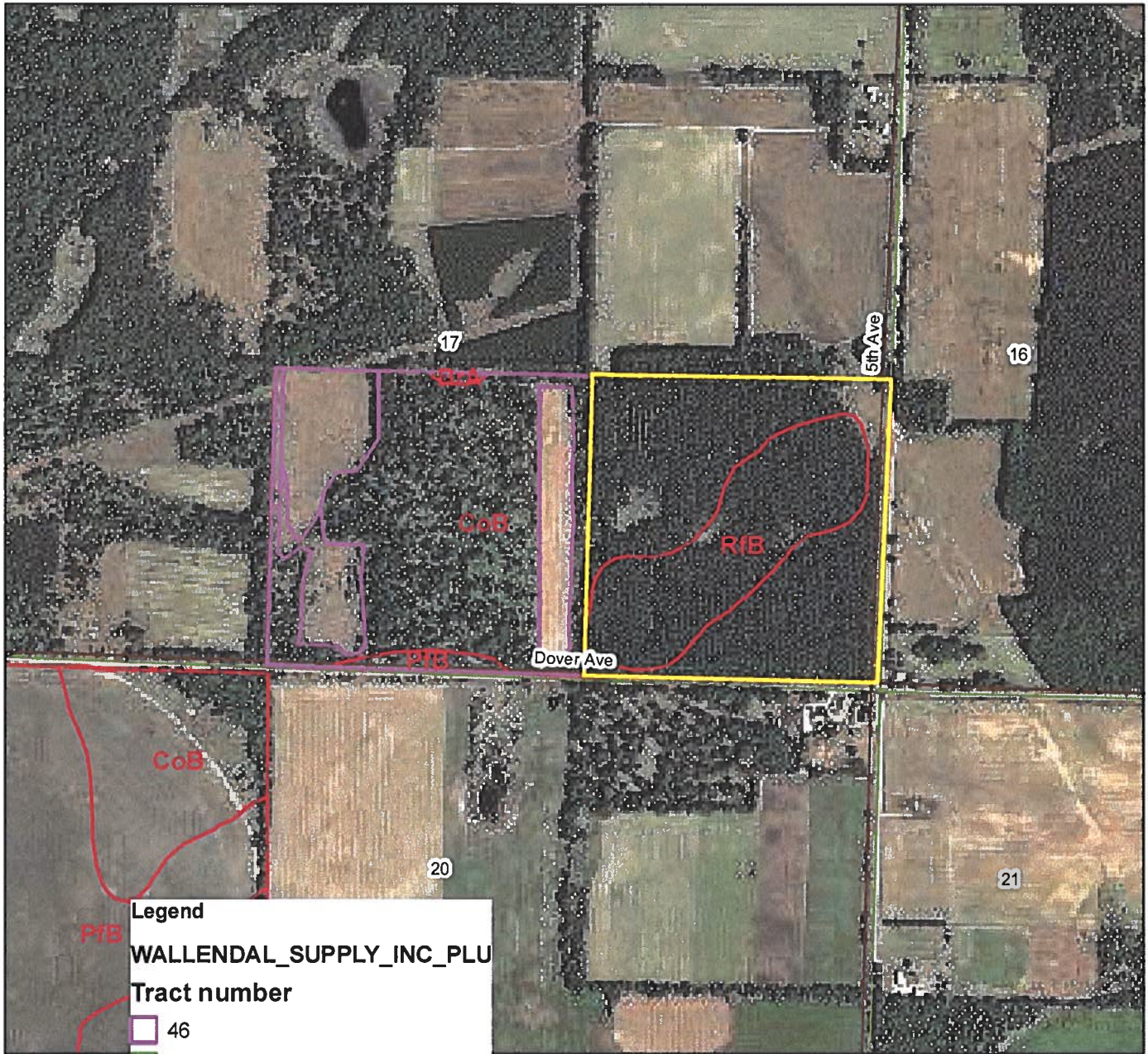
The U.S. Department of Agriculture (USDA) prohibits discrimination in all of its programs and activities on the basis of race, color, national origin, age, disability, and where applicable, sex, marital status, familial status, parental status, religion, sexual orientation, gender identity, genetic information, reprisal, or because all or part of an individual's income is derived from any public assistance program.









SOILS MAP T46 & T3929

Date: 10/23/2012

Customer(s): WALLENDAL SUPPLY INC
District: ADAMS COUNTY LAND CONSERVATION DEPARTMENT
Legal Description: Section 17 T17N R7E
Town of Lincoln

Field Office: WESTFIELD SERVICE CENTER
Agency: USDA-NRCS
Assisted By: J Hoffman
State and County: WI, MARQUETTE



- Legend**
WALLENDAL_SUPPLY_INC_PLU
- Tract number**
-  46
 -  3410
 -  3586
 -  3928
 -  3929
 -  Soils Map
 -  Adams Local Roads
 -  Adams Sections



HIGHLY ERODIBLE LAND AND WETLAND CONSERVATION DETERMINATION

3. NAME OF USDA AGENCY OR PRODUCER REQUESTING DETERMINATION

4. FARM NO. AND TRACT NO. (S)

5. COUNTY

SECTION I - HIGHLY ERODIBLE LAND

6. Is a soil survey now available for making a highly erodible land determination?

7. Are there highly erodible soil map units on this farm?

8. a. List highly erodible tract and fields that, according to ASCS records, were used to produce an agricultural commodity in any crop year during 1981-1985

b. Is an approved conservation plan being actively applied on all of these fields? If "no," list the tract and fields (from the ASCS records) on which a plan is not being applied.

9. a. List highly erodible tract and fields that, according to ASCS records, have been or will be converted for the production of agricultural commodities, were not used for this purpose in any crop year during 1981-1985, and were not enrolled in a USDA set-aside or diversion program.

b. Is an approved conservation system being used on these fields? If "no," list the tract and fields (from the ASCS records) on which a system is not being used.

10. Are there other fields or unnumbered areas that (1) have highly erodible map units, (2) were not used to produce an agricultural commodity in any crop year after 1980, and (3) were not enrolled in a USDA set-aside or diversion program in any crop year during 1981-1985?

11. CERTIFICATION: The (no.) conservation plan(s) was (were) approved by the

19. and conform with technical requirements of the SCS field office technical guide. Conservation systems included in the conservation plan(s) applied (no.)

SECTION II - WETLAND

12. Are hydric soils on this farm? If "yes," list tract and fields (from the ASCS records) or unnumbered areas (un) in which they occur.

13. Do fields that were or will be used to produce an agricultural commodity contain wetland? If "yes," list tract and fields, outline the wetland areas within fields on the ASCS photograph(s), and mark with "w" for wetland; "aw" for artificial and irrigation induced wetland; "mw" for wetland on which the conversion would result in minimal effect.

Are there converted wetlands on this farm that have been converted since December 23, 1985? If "yes," list the tract and fields, outline converted wetlands on the ASCS photograph(s), and mark with "cw."

15. The wetland determination was done in the office field

16. This determination was hand delivered mailed to the producer on 12/1/88 (DATE)

Any producer who does not agree with this determination may request reconsideration from the person making this determination. This request is a prerequisite for any further appeal. The request must be in writing and must set forth reasons for the request. The request must be mailed or delivered within 15 days after written notice of the determination is mailed to or otherwise made available to the producer.

17. REMARKS

18. SIGNATURE OF SCS DISTRICT CONSERVATIONIST

Assistance and programs of the Soil Conservation Service are available without regard to race, religion, color, sex, age, handicap, or national origin.



HIGHLY ERODIBLE LAND AND WETLAND CONSERVATION DETERMINATION

Form with fields for Name, Address, Request Date, County, Tract No, Farm No., Agency/Person, and Requesting Determination.

Section I - Highly Erodible Land

Form with questions: 'Is a soil survey now available for making a highly erodible land determination?' and 'Are there highly erodible soil map units on this farm?'.

Fields in this section have undergone a determination of whether they are highly erodible land (HEL) or not; fields for which an HEL Determination has not been completed are not listed.

Table with columns: Field(s), HEL(Y/N), Sodbust (Y/N), Acres, Determination Date. Rows include field numbers 1,4-8 and 2,3.

The Highly Erodible Land determination was completed in the office.

Section II - Wetlands

Form with question: 'Are there hydric soils on this farm?'.

Fields in this section have had wetland determinations completed. See the Definition of Wetland Label Codes for additional information regarding allowable activities under the wetland conservation provisions of the Food Security Act and/or when wetland determinations are necessary to determine USDA program eligibility.

Table with columns: Field(s), Wetland Label*, Occurrence Year (CW)***, Acres, Preliminary Determination Date, Final Certification Date.

The Preliminary Wetland Determination was completed in the office.

Remarks section for providing additional information.

I certify that the above determinations are correct and were conducted in accordance with regulations and procedures contained in 7 CFR Part 12 and the National Food Security Act Manual.

Signature and Date line for the Designated Conservationist, dated 11/8/2012.

I certify the above determinations as Final. Preliminary Appeal Rights have been either concluded or not utilized in accordance with regulations and procedures contained in 7 CFR Part 614 and the National Food Security Act Manual.

Signature and Date line for the certifier, dated 12/27/12.

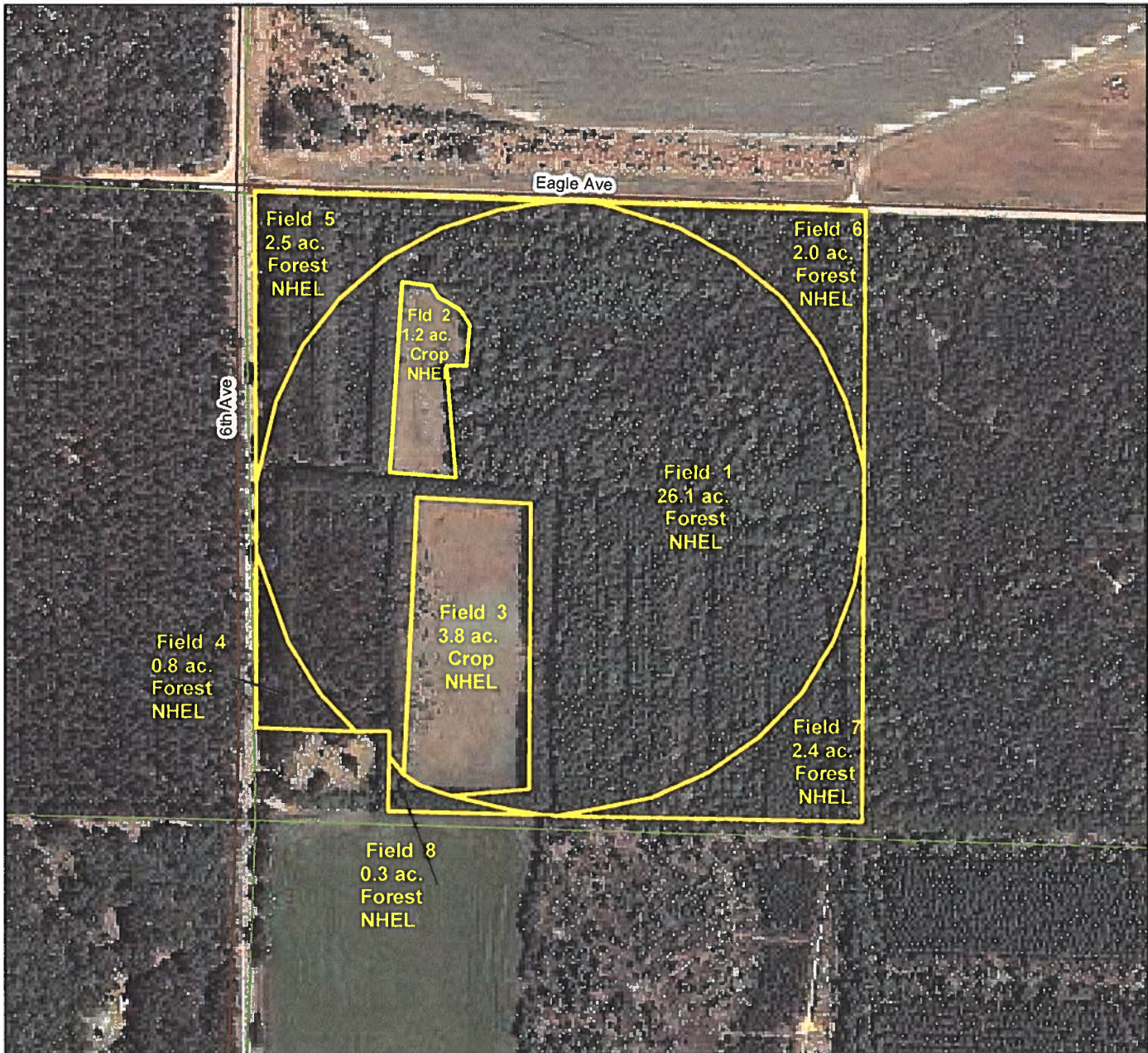
Small text at the bottom regarding USDA's non-discrimination policy and contact information.

CONSERVATION PLAN MAP T3928

Date: 11/01/2012

Customer(s): WALLENDAL SUPPLY INC
District: ADAMS COUNTY LAND CONSERVATION DEPARTMENT
Legal Description: Section 5 T16N R7E
Town of New Chester

Field Office: WESTFIELD SERVICE CENTER
Agency: USDA-NRCS
Assisted By: J Hoffman
State and County: WI, MARQUETTE



Legend

Tract number

3928

Adams Local Roads

Adams Sections





HIGHLY ERODIBLE LAND AND WETLAND CONSERVATION DETERMINATION

Name Address:	WALLENDAL SUPPLY INC 2401 5TH AVENUE GRAND MARSH WI 53963	Request Date:	4/16/2014	County:	ADAMS
Agency or Person Requesting Determination:	FSA	Tract No:	4007	FSA Farm No.:	4165

Section I - Highly Erodible Land

Is a soil survey now available for making a highly erodible land determination?	Yes
Are there highly erodible soil map units on this farm?	No

Fields in this section have undergone a determination of whether they are highly erodible land (HEL) or not; fields for which an HEL Determination has not been completed are not listed. In order to be eligible for USDA benefits, a person must be using an approved conservation system on all HEL.

Field(s)	HEL(Y/N)	Sodbust (Y/N)	Acres	Determination Date
1	No	Yes	34.8	4/24/2014

The Highly Erodible Land determination was completed in the office.

Section II - Wetlands

Fields in this section have had wetland determinations completed. See the Definition of Wetland Label Codes for additional information regarding allowable activities under the wetland conservation provisions of the Food Security Act and/or when wetland determinations are necessary to determine USDA program eligibility.

Field(s)	Wetland Label*	Occurrence Year (CW)	Acres	Determination Date	Certification Date

The wetland determination was completed in the _____ It was _____ to the person on _____

Remarks:

I certify that the above determinations are correct and were conducted in accordance with policies and procedures contained in the National Food Security Act Manual.

Signature Designated Conservationist	Date
CALEB ZAHN <small>Digitally signed by CALEB ZAHN DN: cn=US, o=U S Government, ou=Department of Agriculture, on=CALEB ZAHN, o 9 2342.19200300.100.1.1+12001000292717 Date: 2014.04.24 13:30:43 -0500</small>	4/24/2014

The U.S. Department of Agriculture (USDA) prohibits discrimination in all its programs and activities on the basis of race, color, national origin, gender, religion, age, disability, political beliefs, sexual orientation, and marital or family status. (Not all prohibited bases apply to all programs.) Persons with disabilities who require alternative means for communication of program information (Braille, large print, audiotape, etc.) should contact USDA's TARGET Center at 202-720-2600 (voice and TDD). To file a complaint of discrimination, write USDA, Assistant Secretary for Civil Rights, 1400 Independence Avenue, S.W., Stop 9410, Washington, DC 20250-9410, or call toll-free at (866) 632-9992 (English) or (800) 877-8339 (TDD) or (866) 377-8642 (English Federal-relay) or (800) 845-6136 (Spanish Federal-relay). USDA is an equal opportunity provider and employer.

CONSERVATION PLAN MAP T4007

Date: April 21, 2014

Field Office: A/M/W

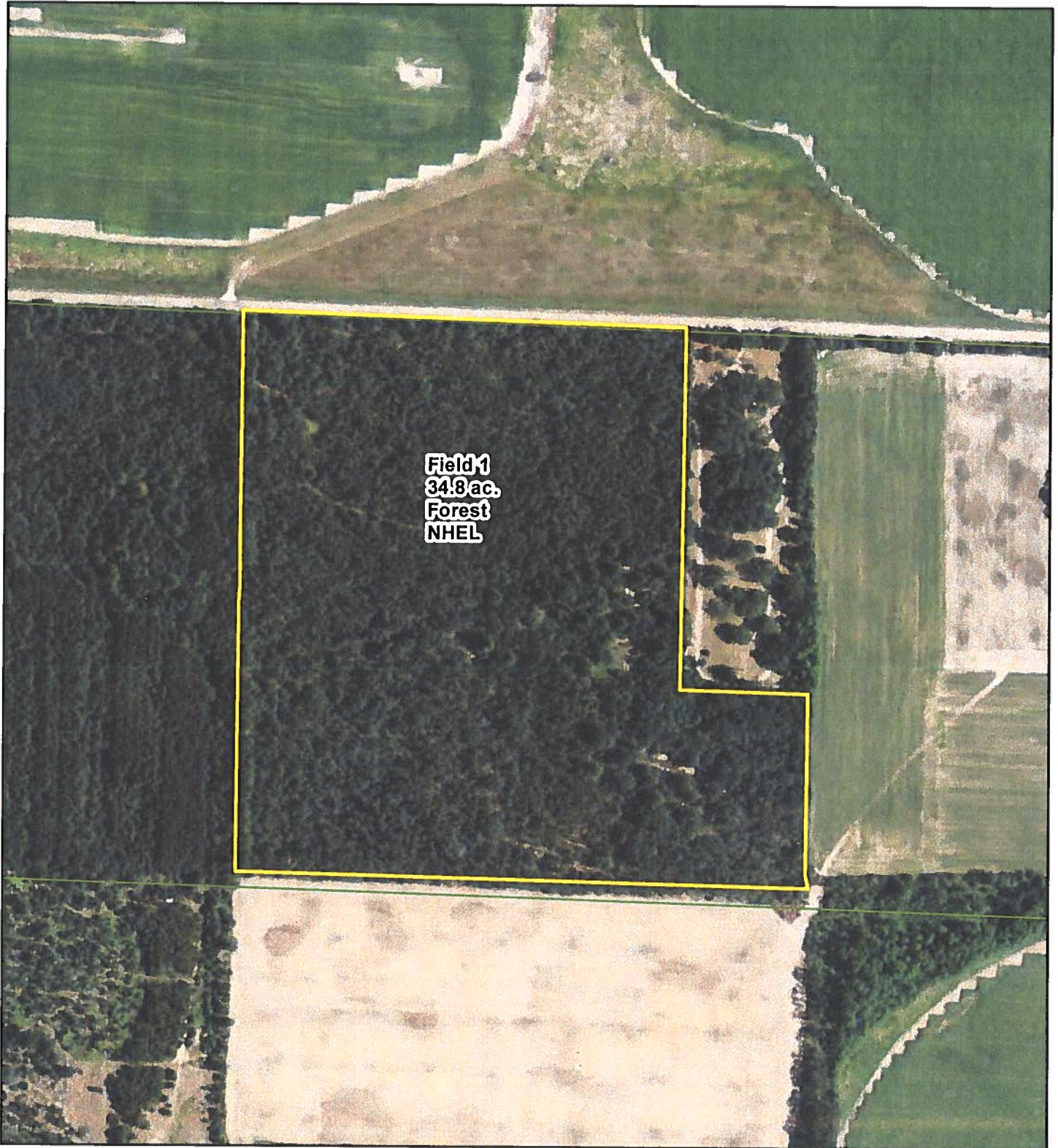
Customers: WALLENDAL SUPPLY

Agency: USDA NRCS

Legal Description: Town of New Chester
T16 R7 Section 5



Assisted By: J Hoffman

State and County: WI, ADAMS



Field 1
34.8 ac.
Forest
NHEL

Legend

-  Tract 4007
-  Adams Sections





HIGHLY ERODIBLE LAND AND WETLAND CONSERVATION DETERMINATION

Name Address:	Spencer Cattell 5509 Midmoor Rd Monona, WI 53716	Request Date:	11/14/2014	County:	Adams
Agency or Person Requesting Determination:	FSA	Tract No.:	570 4152	FSA Farm No.:	483 4328

Section I - Highly Erodible Land

Is a soil survey now available for making a highly erodible land determination?	
Are there highly erodible soil map units on this farm?	

Fields in this section have undergone a determination of whether they are highly erodible land (HEL) or not; fields for which an HEL Determination has not been completed are not listed. In order to be eligible for USDA benefits, a person must be using an approved conservation system on all HEL.

Field(s)	HEL(Y/N)	Sodbust (Y/N)	Acres	Determination Date

The Highly Erodible Land determination was completed in the

Section II - Wetlands

Fields in this section have had wetland determinations completed. See the Definition of Wetland Label Codes for additional information regarding allowable activities under the wetland conservation provisions of the Food Security Act and/or when wetland determinations are necessary to determine USDA program eligibility.

Field(s)	Wetland Label*	Occurrence Year (CW)	Acres	Determination Date	Certification Date
1, 12, 13	W		9.0	2/18/2015	3/18/2015
1, 4, 5, 7-9, 13	PC/NW		78.9	2/18/2015	3/18/2015
10, 12	NW		68.2	2/18/2015	3/18/2015

The wetland determination was completed in the office. It was mailed to the person on 2/18/2015

Remarks: This is a whole tract determination for FSN 483 Tract 570. Request for wetland determination has been completed. No woody vegetation removal, filling, draining or tilling is allowed in areas labeled as "W". Land clearing can ONLY be done in areas labeled as "NW" or "PC/NW".

I certify that the above determinations are correct and were conducted in accordance with policies and procedures contained in the National Food Security Act Manual.

Signature Designated Conservationist	Date
<i>Chloe Z. V. d.</i>	2/18/2015

The U.S. Department of Agriculture (USDA) prohibits discrimination in all its programs and activities on the basis of race, color, national origin, gender, religion, age, disability, political beliefs, sexual orientation, and marital or family status. (Not all prohibited bases apply to all programs.) Persons with disabilities who require alternative means for communication of program information (Braille, large print, audiotape, etc.) should contact USDA's TARGET Center at 202-720-2600 (voice and TDD). To file a complaint of discrimination, write USDA, Assistant Secretary for Civil Rights, 1400 Independence Avenue, S.W., Stop 9410, Washington, DC 20250-9410, or call toll-free at (866) 632-9992 (English) or (800) 877-8339 (TDD) or (866) 377-8642 (English Federal-relay) or (800) 845-6136 (Spanish Federal-relay). USDA is an equal opportunity provider and employer.

WETLAND INVENTORY MAP

Date: February 18, 2014
Customer: Spencer Cattell
Legal Description: T17N R7E Sec 16, 17

Farm 483
Tract 570

Agency: NRCS
County: Adams
Map by: Kristen LaBlanc

