



United States
Department of
Agriculture

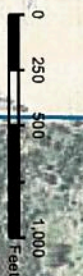
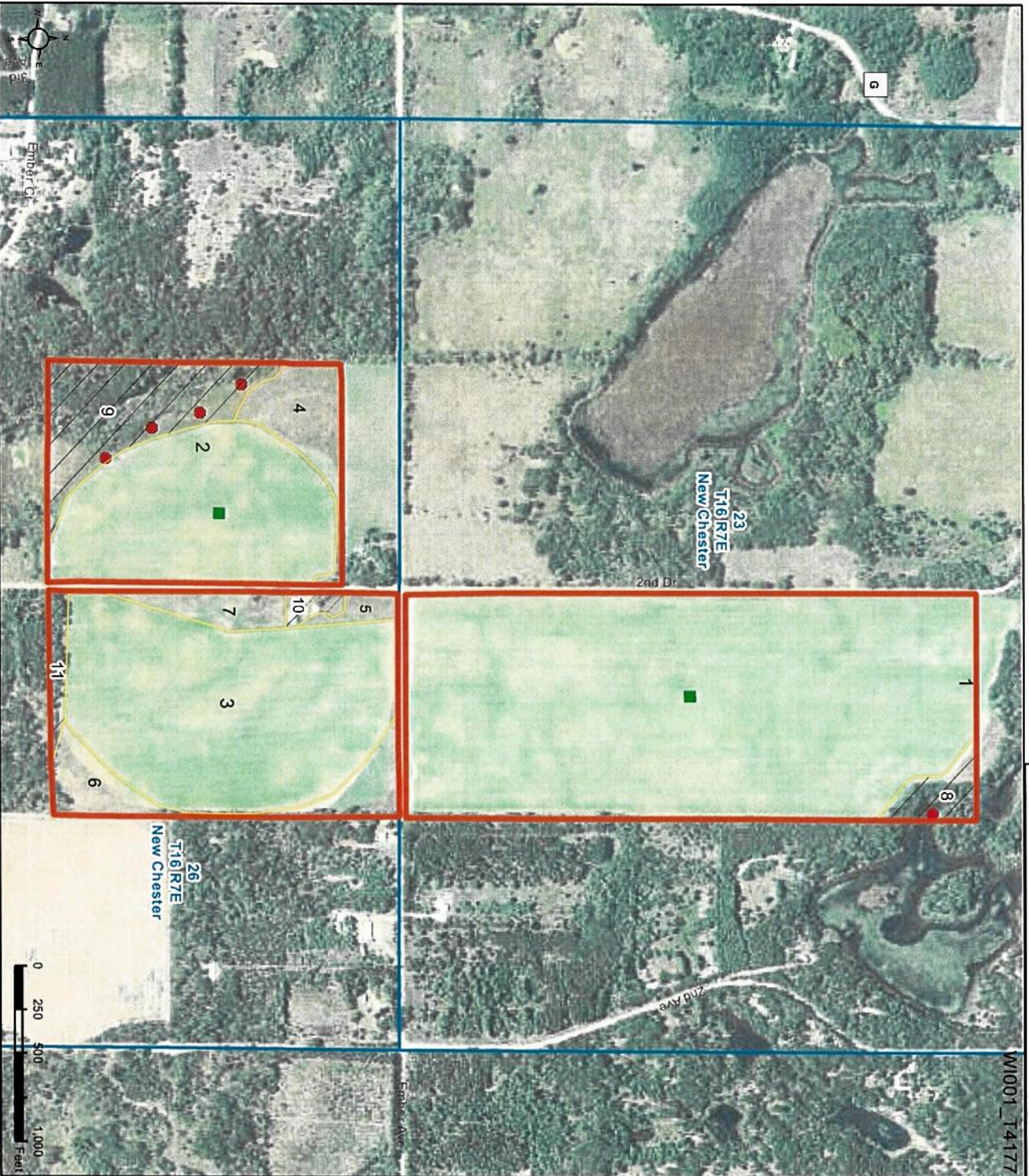
Adams County, Wisconsin

Entire Tract: IR / NI GR / FG unless otherwise labeled
Name/Shares: _____

Farm 4351 Tract 4177 2018 Program Year

CLU	Acres	HEL	Crop
1	94.08	NHEL	
2	28.58	NHEL	
3	42.71	NHEL	
4	6.57	NHEL	
5	1.45	UHFL	
6	8.0	NHEL	
7	3.58	NHEL	
8	3.32	HEL	
9	13.85	NHEL	
10	1.15	UHFL	
11	2.05	NHEL	

Page Cropland Total: 184.97 acres



- Common Land Unit**
 - Cropland
 - Non-Cropland
- Tract Boundary**
- PLSS**
- NAP Imagery 2017 Wetland Determination Identifiers**
 - Limited Restrictions
 - Restricted Use
 - Exempt from Conservation
 - Compliance Provisions

Map Created March 09, 2018

USDA FSA maps are for FSA Program administration only. This map does not represent a legal survey or reflect actual ownership; rather, it depicts the information provided directly from the producer and/or the NAP imagery. The producer accepts the data as is, and assumes all risks associated with its use. The USDA Farm Service Agency assumes no responsibility for actual or consequential damage incurred as a result of any user's reliance on this data outside FSA Programs. Wetland identifiers do not represent the size, shape, or specific determination of the area. Refer to your original determination (CPA-026 and attached maps) for exact boundaries and determinations or contact NRCS.